

REFERENCE

LABORATORY INFORMATION MANAGEMENT SYSTEMS

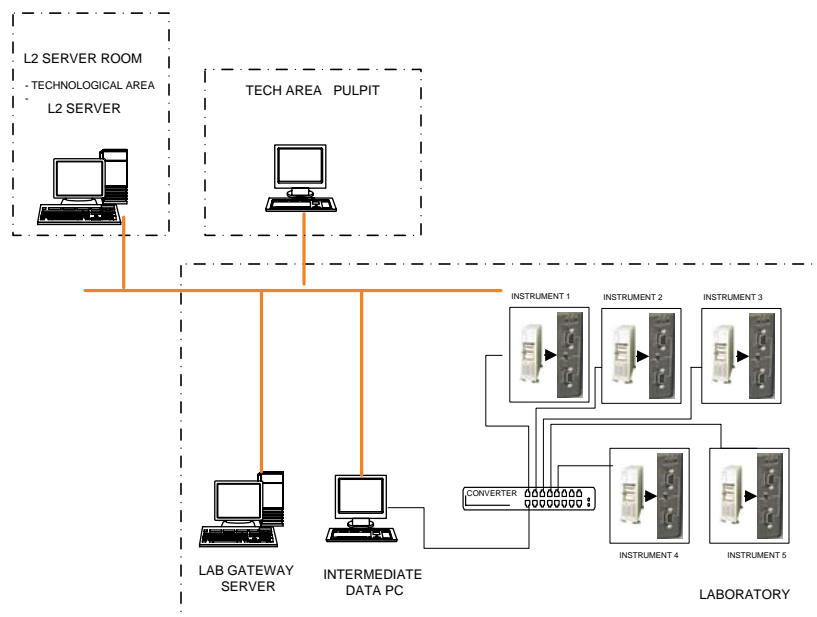
SYSTEM OVERVIEW

The requirement was for a laboratory gateway necessary to update the operators and the ongoing processes on the Chemical laboratory results to take necessary corrective action to alter the chemistry of the steel as per the requirement and also be able to communicate with the L2 systems of the different technological areas.

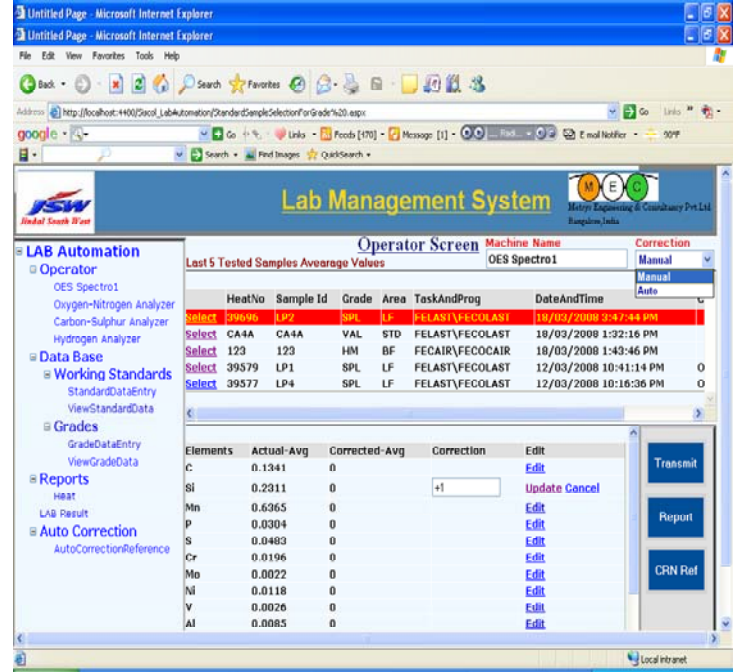
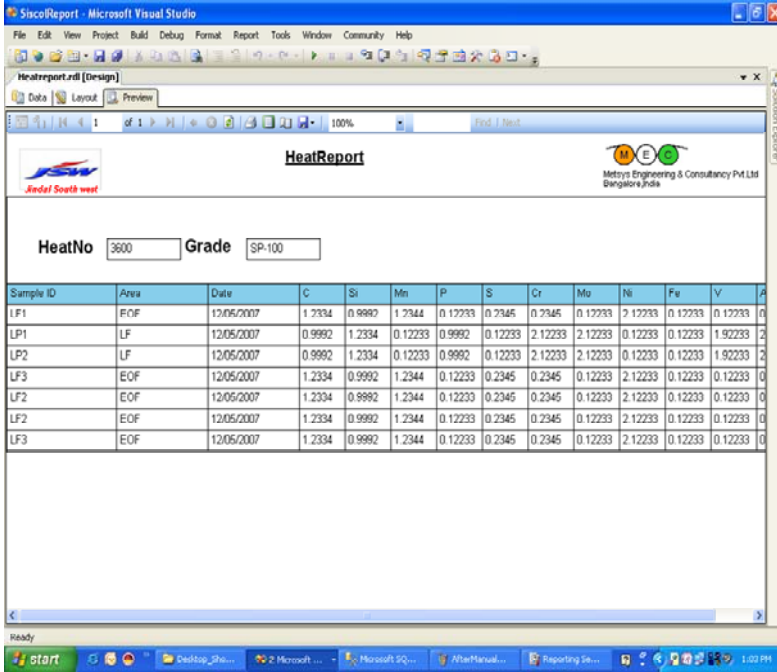
SYSTEM FUNCTIONS

- Raw material Quality parameter database handling
- Quality analysis data of processed steel
- Interface with laboratory equipments
- Interface with L2 systems
- Reporting

AUTOMATION BLOCK DIAGRAM



SCREEN SHOTS



SYSTEMS AND PRODUCTS FROM LEADING VENDORS,
APPLICATION KNOWHOW FROM METSYS

COMPLETE SOLUTIONS FROM LEVEL 0 to LEVEL 3

LEVEL 3 – Agreement with Broner Metals of UK

combination of Metsys and Broner represents a substantial force that will ensure the most effective implementation of a strong MES solution through a combination of local availability of skilled and experienced resource backed by an extensive suite of MES solutions that are designed for metals.

LEVEL 0

- MV/LV power distribution
- Drive systems AC/DC
- AC/DC motors
- Instrumentation

LEVEL 1/1.5

- Equipment control systems
- Alarm and HMI operator interface
- Fast Data Acquisition systems
- Pass schedule handling systems
- Technological packages for
 - AGC Control

LEVEL 2

- Production scheduling systems
- Tracking
- Reporting

COMPLETE SERVICES

- Engineering for turnkey packages
- Equipment healthiness study and up gradation reports
- fine tuning performance.
- study of productivity improvement
- Commissioning